

Soldering Photo Albums

Bob Willis, world-renowned soldering expert, has developed an extensive library of electronic assembly soldering photographs. These are available on CD-ROM, and are an essential resource for process engineers and trainers for illustration of soldering concepts. ALC is pleased to make Bob's well-known soldering photo albums available for secure on-line purchase at www.automatedlearning.com.

These soldering photographs are provided as a resource for workshops and general educational events. The images are also ideal for use in manuals, standards, and to illustrate technical articles and textbooks. The photographs are provided royalty free provided they are not resold as individual images or as part of an image library.

The images are generally provided in .tif format but in some cases are in .jpg format. It is recommend that the tif images are not used directly in PowerPoint presentations due to their size. Resizing the images to approximately 400 x 300 pixels and 72 dpi in jpg format is ideal for PowerPoint.

This .pdf contains low-resolution thumbnail examples, the actual photo album CDs provide larger high-resolution images, are updated continually and typically contain much more.

For more information or to purchase these CDs:

Web: www.automatedlearning.com/purchasing/solderingphotos.cfm

eMail: sales@automatedlearning.com

Tel: (613) 599-9975

Soldering Albums available on CD include:

Lead Free Assembly and Soldering	Solder Paste Printing
0201 Chip Components	Conventional Assembly Process Defects
Surface Mount Process Defects	Printed Circuit Board
Ball Grid Array	Wire Preparation and Crimping
Pin in Hole Reflow Soldering	SM and Conventional Components
Flip Chip Assembly	SM and Conventional Joint Illustrations



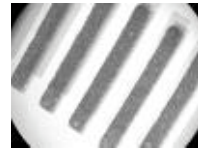
070.tif



070s.jpg



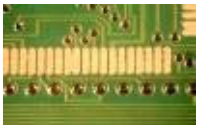
071.tif



071s.jpg



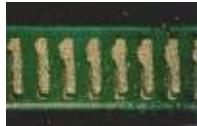
0072.tif



0073.tif



0074.tif



0076.tif



0077.tif



0079.tif



0080.tif



0109.tif



0110.tif



0111.tif



0112.tif



0113.tif



0114.tif



0115.tif



0116.tif



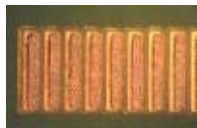
0117.tif



0118.tif



0120.tif



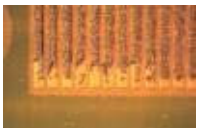
0121.tif



0122.tif



0123.tif



0124.tif



0125.tif



0126.tif



0127.tif



0129.tif



0130.tif



0131.tif



0132.tif



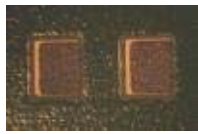
0139.tif



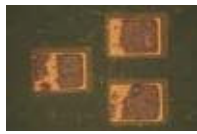
0140.tif



0141.tif



0142.tif



0143.tif



0144.tif



0346.jpg



0347.jpg



0348.jpg



0349.jpg



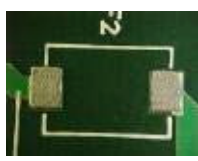
0350.tif



0352.tif



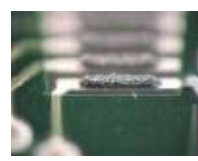
0376.tif



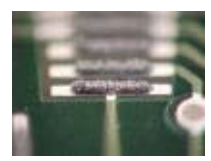
bw01.jpg



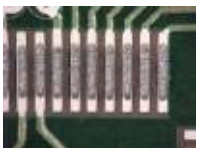
bw02.jpg



bw03.jpg



bw04.jpg



bw05.jpg



bw06.jpg



bw07.jpg



bw07s.jpg



bw08.jpg



bw09.jpg



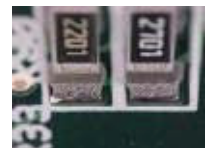
bw10.jpg



bw11.jpg



bw12.jpg



bw13.jpg



bw14.jpg



bw14s.jpg



bw15.jpg



bw16.jpg



bw17.jpg



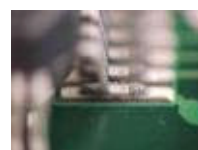
bw18.jpg



bw18s.jpg



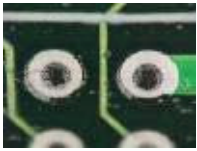
bw19.jpg



bw20.jpg



bw21.jpg



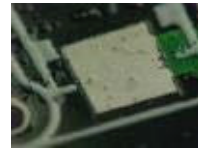
bw022.jpg



bw023.jpg



bw023s.jpg



bw024.jpg



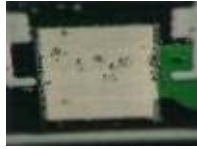
bw025.jpg



bw025s.jpg



bw026.jpg



bw027.jpg



bw028.jpg



bw029.jpg



bw030.jpg



bw031.jpg



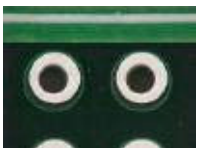
bw032.jpg



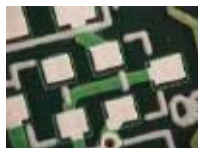
bw033.jpg



bw034.jpg



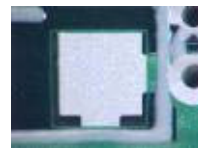
bw035.jpg



bw036.jpg



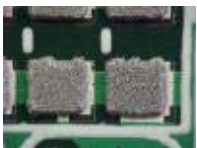
bw037.jpg



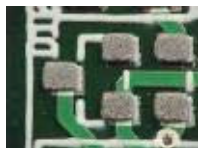
bw038.jpg



bw039.jpg



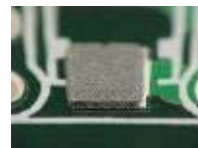
bw040.jpg



bw041.jpg



bw042.jpg



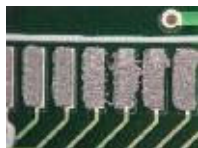
bw043.jpg



bw044.jpg



bw045.jpg



bw046.jpg



bw047.jpg



bw047s.jpg



bw048.jpg



bw049.jpg



bw050.jpg



bw051.jpg



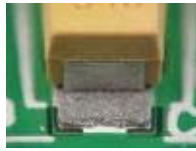
bw052.jpg



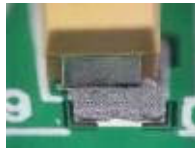
bw053.jpg



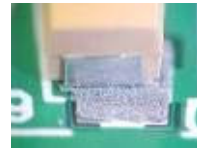
bw054.jpg



bw055.jpg



bw056.jpg



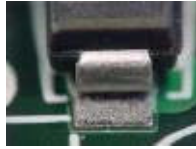
bw057.jpg



bw058.jpg



bw059.jpg



bw060.jpg



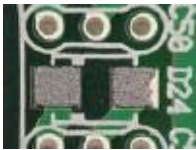
bw061.jpg



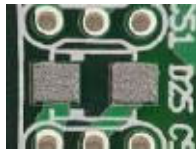
bw062.jpg



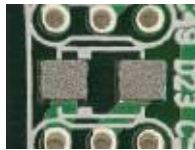
bw063.jpg



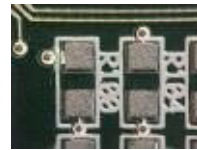
bw064.jpg



bw065.jpg



bw066.jpg



bw067.jpg



bw068.jpg



bw069.jpg



bw070.jpg



bw071.jpg



bw072.jpg



bw073.jpg



bw074.jpg



bw075.jpg



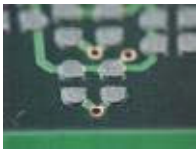
bw076.jpg



bw077.jpg



bw078.jpg



bw079.jpg



bw080.jpg



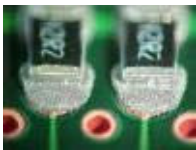
bw081.jpg



bw082.jpg



bw083.jpg



bw084.jpg



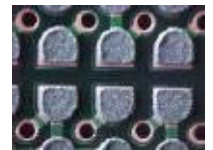
bw085.jpg



bw086.jpg



bw087.jpg



bw088.jpg



bw089.jpg



bw090.jpg



bw091.jpg



bw092.jpg



bw093.jpg



bw094.jpg



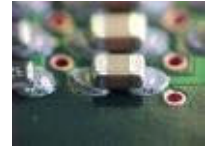
bw095.jpg



bw096.jpg



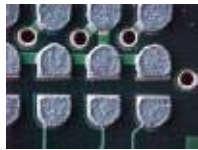
bw097.jpg



bw098.jpg



bw099.jpg



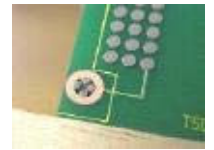
bw0100.jpg



bw0101.jpg



bw0102.jpg



bw0103.jpg



bw0104.jpg



bw0105.jpg



bw0106.jpg



bw0107.jpg



bw0108.jpg



bw0109.jpg



bw0110.jpg



bw0111.jpg



bw0112.jpg



bw0113.jpg



bw0114.jpg



bw0115.jpg



bw0116.jpg



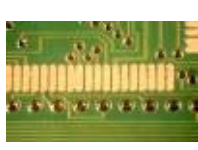
bw0117.jpg



bw0117.tif



bw0118.jpg



bw0118.tif



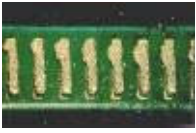
bw0119.jpg



bw0119.tif



bw0120.jpg



bw0120.tif



bw0121.jpg



bw0121.tif



bw0122.jpg



bw0122.tif



bw0123.jpg



bw0123.tif



bw0124.jpg



bw0124.tif



bw0125.jpg



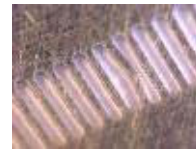
bw0125.tif



bw0126.jpg



bw0126.tif



bw0127.jpg



bw0127.tif



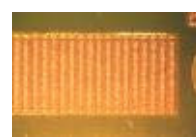
bw0128.jpg



bw0128.tif



bw0129.jpg



bw0129.tif



bw0130.jpg



bw0130.tif



bw0131.tif



bw0132.tif



bw0133.tif



bw0134.tif



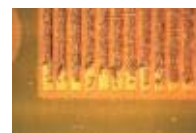
bw0135.tif



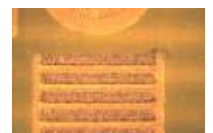
bw0136.tif



bw0137.tif



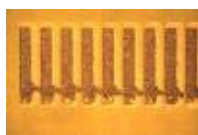
bw0138.tif



bw0139.tif



bw0140.tif



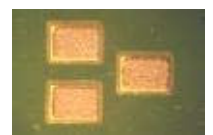
bw0141.tif



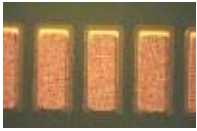
bw0142.tif



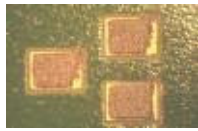
bw0143.tif



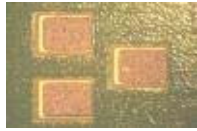
bw0144.tif



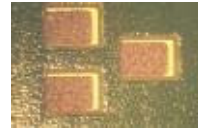
bw0145.tif



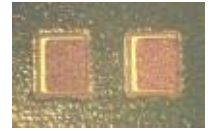
bw0146.tif



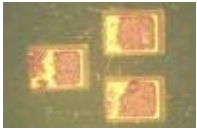
bw0147.tif



bw0148.tif



bw0149.tif



bw0150.tif



bw0151.tif



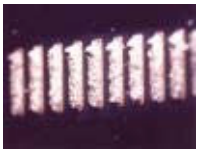
bw0152.tif



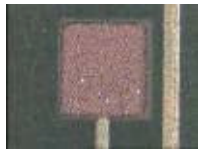
bw0153.tif



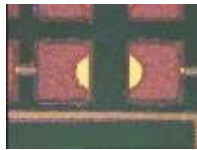
bw0154.tif



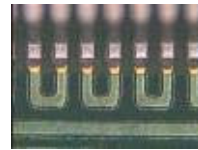
bw0155.tif



bw0156.jpg



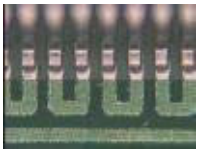
bw0157.jpg



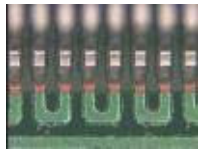
bw0158.jpg



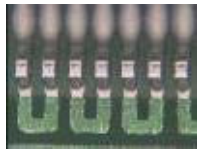
bw0159.jpg



bw0160.jpg



bw0161.jpg



bw0162.jpg



bw0163.jpg



bw0164.jpg



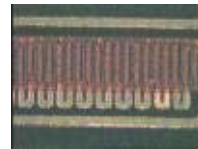
bw0165.jpg



bw0166.jpg



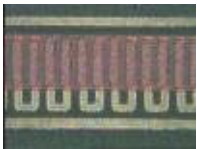
bw0167.jpg



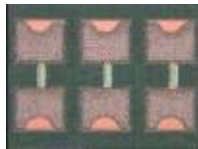
bw0168.jpg



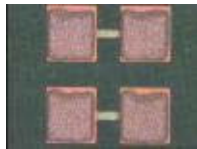
bw0169.jpg



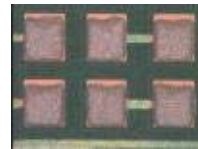
bw0170.jpg



bw0171.jpg



bw0172.jpg



bw0173.jpg



bw0174.jpg



bw232s.jpg



bw234s.jpg



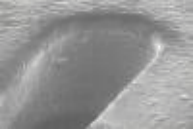
stenbras.jpg



stenlas.jpg



stennf.jpg



stennick.jpg



stenstel.jpg