

## **Photographic Poster Guides**

### **Counterfeit Component Photographic Poster Guide**

Counterfeit Components have become a significant threat to the reliability and profitability of the electronics industry. This 28-page colour poster guide is ideal as a reference source to reduce the impact of counterfeit components on your organization. The guide covers many of the following topics:

- Optical Inspection
- Solvent Testing
- Lead Inspection
- Component Packaging & Labeling
- Marking Durability
- X-Ray Analysis
- XRF Inspection
- Encapsulation



The individual sheets can be printed as A4 for bench top reference or as A3 colour posters for reference at goods receipt inspection, and can also be viewed on computer screen. Each page features three images illustrating points to examine or steps in the inspection process. This guide is provided as an Acrobat pdf file for onsite printing and display.

[Buy now online](#)

If you are viewing this document onscreen, the blue text items are clickable links.

### **Conformal Coating Photographic Poster Guide**

This 24- page colour poster guide is ideal as a reference source for operators, inspection and training departments in your organization. The guide covers many of the following:

|                          |                    |                         |
|--------------------------|--------------------|-------------------------|
| Surface Corrosion        | Solder Balls       | Fish Eye Bubbles        |
| Through Hole Penetration | Vesication         | Bug Eye Bubbles         |
| Bubbles                  | Spitting           | Surface Fibers          |
| Delamination             | Contamination      | Rework Over Spray       |
| Excessive Coating        | Finger             | Conformal Coating Brush |
| Insufficient Coating     | Surface De-wetting | Hairs                   |
| Thickness                | Blistering         | Surface dendrites       |
| Thickness Variation      | Cracked Coating    | Hand Brushing Debris    |
| Coating Skips            | Shadowing          |                         |
| Masking Residues         | Coating Runs       |                         |

The individual sheets can be printed as A4 for bench top reference or as A3 colour posters for reference in manufacturing, and can also be viewed on computer screen. Each page features three images illustrating points to examine or steps in the inspection process. This guide is provided as an Acrobat pdf file for onsite printing and display.

[Buy now online](#)

**Example Page****SOLVENT MARKING TEST FOR COUNTERFEIT COMPONENTS**

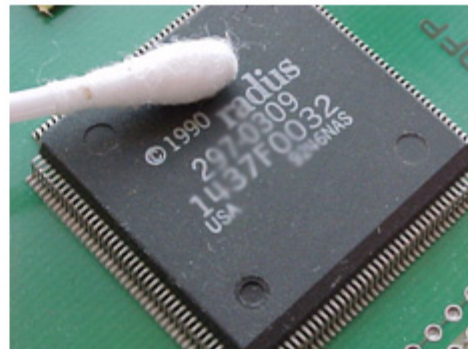
Solvent testing is conducted on markings to see if they can be degraded or easily removed which may indicate remarking. Some components have been found to have protective coating placed over new markings to help pass this test



Using a cotton bud dipped in Acetone repeatedly wipe the surface of the component. This test may remove the marking or the black surface coating applied prior to remarking to disguise previous labelling or grinding of the surface of the plastic. Suitable eye and hand protection should be worn

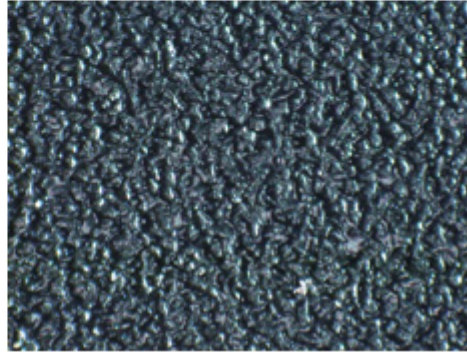


During testing if there is evidence of any part of the marking being removed, smudged or the cotton bud turning black the parts and supply source should be investigated further. Printed markings may be removed, laser or mechanical markings would not be removed with a solvent test

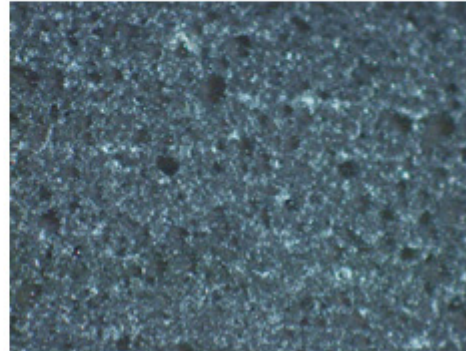


**Example Page****COMPONENT OPTICAL INSPECTION**

**Inspect the surface of the component body. All surfaces should have a similar surface appearance and reflect light in a similar manner.**



**If a surface has been modified/ground to remove previous marks there will be a difference in the surface particularly around the marking**



**Any modification to the surface may change the appearance of surface features like moulding marks, laser marks and pin dimple indicators. In this case the surface of the plastic is as produced with sharp edges to the mould contours**

